



Cancer Care Ontario

# Providing better care – together

Acute Leukemia  
Shared-Care Program



**Ontario**  
Cancer Care Ontario



# Where will I get my treatment?

You will receive the care you need at Princess Margaret Cancer Centre and at your Partner Cancer Centre. This diagram shows you where your care will be provided.

## What is the Acute Leukemia Shared-Care Program?

The Acute Leukemia Shared-Care Program allows patients to receive care closer to their home. If you live far away from Princess Margaret Cancer Centre, you may be able to receive some of the care you need at a Partner Cancer Centre closer to your home. This allows you to spend less time travelling to receive the same high quality care for your leukemia treatment.

## Which Partner Cancer Centres are participating in the Program?

The Partner Cancer Centres currently working with Princess Margaret Cancer Centre in the Program include:

- Stronach Regional Cancer Centre
- Simcoe Muskoka Regional Cancer Centre
- R.S. McLaughlin Durham Regional Cancer Centre

## How can I participate?

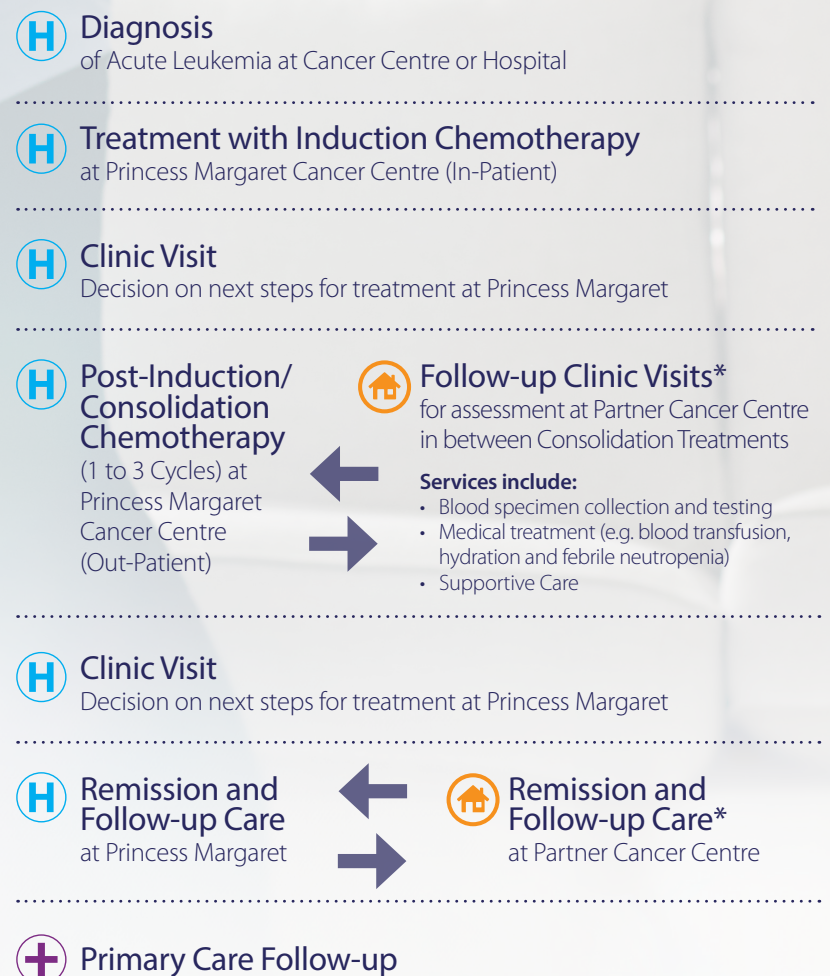
Before you finish your induction chemotherapy (your first treatment) at Princess Margaret Cancer Centre, you will meet with a Nurse Coordinator. The Coordinator will tell you about the Program and what it means for your ongoing care. If you choose to be in the Program, you will need to give consent for your health information to be shared with your Partner Cancer Centre.

**For every appointment, you will need to bring your:**

- Health Card
- Hospital Card, if required
- Medications
- Patient Binder

## Acute Leukemia Shared-Care Model

**LEGEND:**  Princess Margaret Cancer Centre  Partner Cancer Centre  Primary Care



This diagram represents the shared-care model for a person with acute myeloid leukemia (AML).  
\* Components of care may be transferred back to Princess Margaret Cancer Centre depending on care needs.

If you have questions about the Acute Leukemia Shared-Care Program, please talk to your health care providers at Princess Margaret Cancer Centre or your Partner Cancer Centre.

# Working together to create the best health systems in the world



**Lakeridge  
Health**

R.S. McLaughlin  
Durham Regional  
Cancer Centre

Simcoe Muskoka  
Regional Cancer Program



Royal Victoria  
Regional Health Centre

STRONACH  
REGIONAL CANCER  
CENTRE  
AT SOUTHLAKE

CENTRE RÉGIONAL  
DE CANCÉROLOGIE  
STRONACH  
À SOUTHLAKE



**SOUTHLAKE**  
REGIONAL HEALTH CENTRE



**UHN**

Princess  
Margaret  
Cancer Centre

Your Partner Cancer Centre closer to home is:

**Need this information in an accessible format?**

1-855-460-2647, TTY (416) 217-1815

publicaffairs@cancercare.on.ca

CPQ2172-2016



**Ontario**  
Cancer Care Ontario