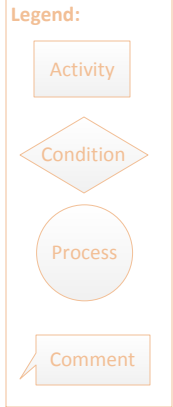
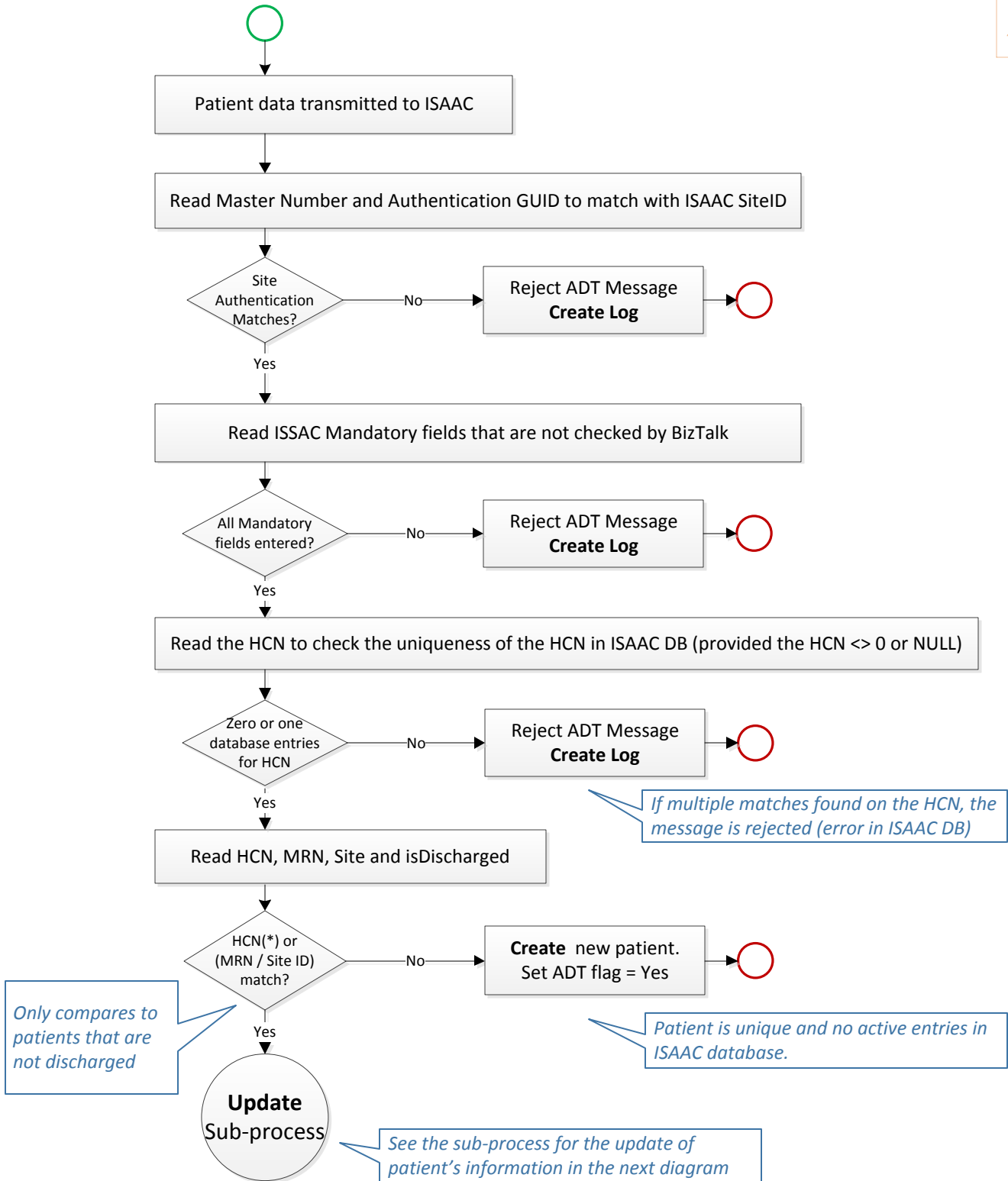


ADT Integration Process



Notes for the whole process (ADT integration process and sub-process update):
 1 – It does not matter whether you receive and ADT add or ADT update: you will create or update the patient's information based on the rules described in the process
 2 – You check if the HCN match in ISAAC DB only if the HCN of the ADT message is not null. **To highlight this rule, HCN(*) will be indicated in the process for not null value.**



Update Process

